



Banded Hairstreak



Red-banded Hairstreak



Hummingbird Clearwing Moth



Gray Hairstreak



Silver-spotted Skipper

Bergen County Audubon Society

Bergen County Audubon (BCAS) is the local chapter of the National Audubon Society. Founded over 70 years ago, the chapter’s mission is to promote and protect wildlife in its natural habitat by providing opportunities for observation and conservation.

Through walks, programs and education outreach, BCAS offers the public a range of opportunities to enjoy the birds, butterflies, and plants throughout the county and beyond.

Membership is open to all regardless of residence. For more information – to join – to see our calendar of programs, walks, field trips and events...

Visit at: www.BergenCountyAudubon.org

Contact at: Greaauk4@aol.com

LIKE us on **Facebook:**

www.tinyurl.com/bcasfacebook



Broad-winged Skipper



Peck's Skipper



Zabulon Skipper



Least Skipper

Bergen County Audubon Society

A Chapter of the National Audubon Society

BUTTERFLIES

of Northern New Jersey



Monarch



Eastern Tiger Swallowtail



Wild Indigo Duskywing



Monarch Caterpillar

“Jewels of Summer”

The life cycle of a butterfly – egg, caterpillar (larvae), chrysalis (pupa), adult – is called a complete metamorphosis. **Native Plants** are vital to this cycle. They serve as hosts (food) for the larvae and nectar sources (food) for the adults.

Photos by Theresa Ciruolo, Hadel Go, Alice Leurck, Marie Longo, Julie McCall, Deedee Burnside, Denise Farrell.
Public Domain when member photo not available
© 2013, Bergen County Audubon Society

LARGE & SWALLOWTAILS



Black Swallowtail



Great Spangled Fritillary



Question Mark



Eastern Comma



Male - Black Swallowtail - Female

MEDIUM (1.5 to 3.5 inches)



Red Admiral



Common Buckeye



Common Wood Nymph



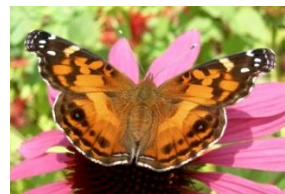
Little Wood Satyr



Spicebush Swallowtail



Painted Lady



American Lady



Cabbage White



Orange Sulphur



Pipevine Swallowtail



Viceroy



Mourning Cloak

SMALL & SKIPPERS



Giant Swallowtail



Red-spotted Purple



American Snout



Eastern-tailed Blue



Pearl Crescent